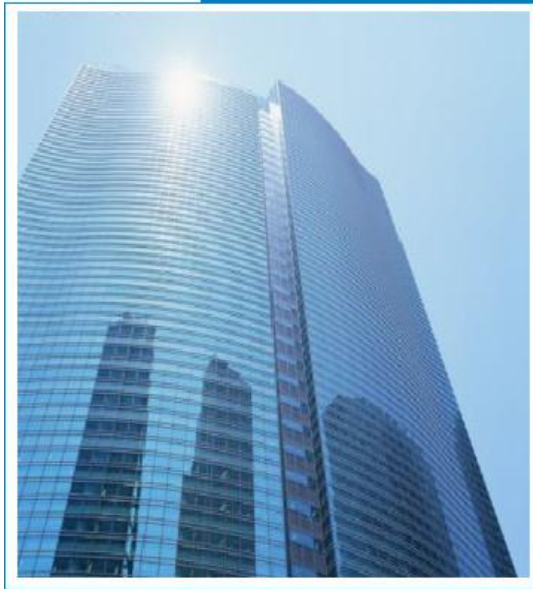




KALYANI TECHNOLOGIES

DRIVING INNOVATION





Introducing Kalyani Technologies

Kalyani Technologies Ltd (erstwhile Kalyani Infotech), the Technology arm of **Kalyani Group** which is one of the leading Industrial Houses in India, having diverse business interests in Engineering Steel, Forgings, Auto Components, Non Conventional & Nuclear Energy. The Group's Annual Turnover is over USD 2.6 billion and has joint ventures with some of the world leaders such as ArvinMeritor USA, Carpenter Technology Corporation USA, Hayes Lemmerz USA, FAW Corporation China, NTPC, Alstom, Areva etc.

Kalyani Technologies is an ISO 9001:2008 compliant organization and also achieved ISO 27001:2005 (Information Security Management Services Certification) for its services at Bharat Forge Pune.



Information Tech.& Network Services

- Managed IT services
- Shared Services
- Data Center Management
- Net Work design and solutions
- Convergence of voice and data
- Wireless solutions
- Network audits
- Information Security governance
- Microsoft Infrastructure services
- Share point services



Safety and Security Services

- Electronic Access control
- CCTV surveillance Systems
- Entry / Exit Barrier systems
- Perimeter protection
- Fire alarm and detection systems
- Clean room fire suppression
- Water Hydrant and sprinklers
- Gas detection
- PA & Voice Evacuation systems
- Integrated BMS

Introduction : Company Profile

KALYANI TECHNOLOGIES



Quality

- Implemented Integrated Management System
 - ISO 27001 (ISMS)
 - ISO20000 (ITSM / ITIL V3)
 - ISO 9001 (QMS)
- Stringent, Quality conscious approach
- Specific emphasis on domain skills and practitioners' approach
- Dedicated knowledge management and continuous skill up gradation
- Measurements based on industry standards.
- Foundation for a fully integrated network in the future



Our strengths

- Strong leadership
- Strong vision and values
- Strong Manufacturing Domain Knowledge
- Very small to turnkey project execution experience
- Strong technical experience in various domains
- Strategic Alliances
- Process driven
- Proven Capability of executing assignments
- Pool of skilled and competent manpower
- Experienced in Managed IT Services



- ❖ Email and allied services
 - Microsoft Ex-change email service
 - Blackberry connectivity
 - Office communication system (OCS)
 - Calendar
- ❖ Hosting ERP services
- ❖ Database and Application services
- ❖ Intranet web services
- ❖ Service Desk
- ❖ Workforce management system
- ❖ Network security Services
- ❖ Information security



Work force Management System



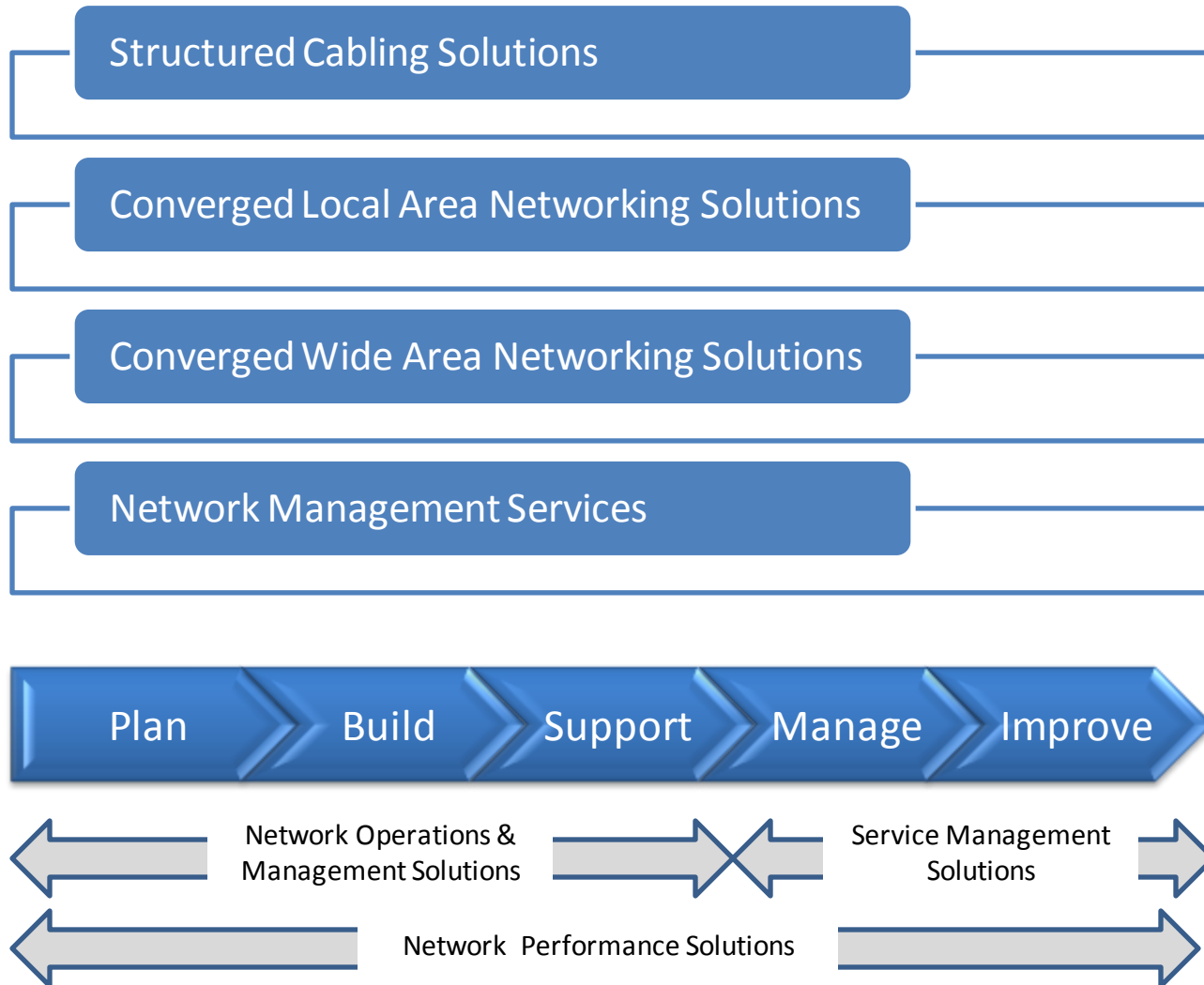
Innovative Storage and Data Management Solutions

MAIA Intelligence

Integrated Business Intelligence reporting software and
Query analyzer tools



Comprehensive Integrated, Agent less, end-to-end IT Service
Desk management System



Methodology

- Detail System Requirement Study
- Develop Project Charter
- Define Scope of work
- Design of technology solution and it's validation
- Gap Fit Analysis
- Suggestive Alternate & Solution
- Customization
- User Acceptance
- Going Live
- Continuous project health monitoring
- User Training
- Post Go-Live Support
- Risk Assessment and mitigation
- Customer satisfaction and feedback

Our Value Proposition

- Consultative & Customer Centric Approach
- Solutions are focused towards ROI to our clients
- We deliver on commitments
- Maximize Performance and Quality of IT Infrastructure
- Flexible and Adaptable Methodology
- Win-Win proposition
- We grow along with You *Making Clients Successful.*
- Unwavering Dedication
- Team, Innovate, Excel
- Leverage on Huge Domain Skills and Experience from within the Group

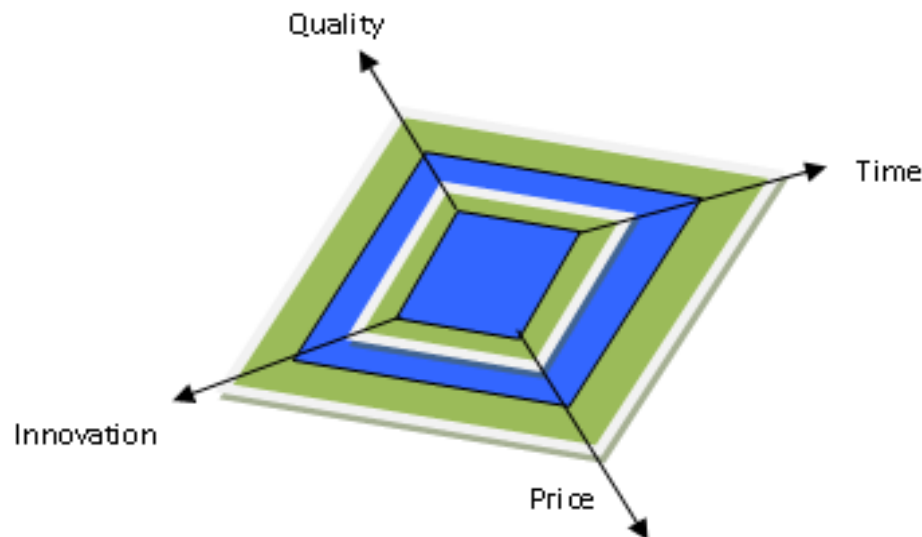
Tools:

OTDR Meter

Splicing Machine for MM & SM Fiber

Penta Scanner

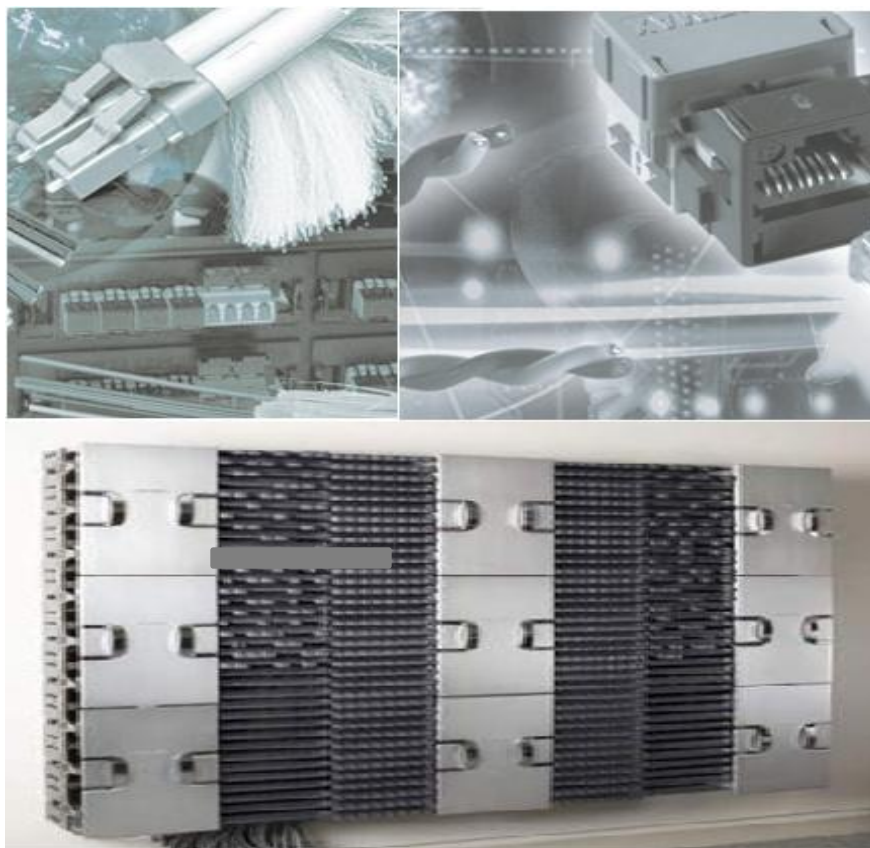
- ❖ At Kalyani Infotech, we aim at providing customer the best of resources and expertise for network analysis, design, and optimization of customer need to make the right network decisions and, implement changes with minimal risk and help ensure peak-network performance.



❖ Kalyani Infotech offers World Class Solution based on World Class Products in :

Passive Components

Active Components



Offers world class solutions based on world class products

Cisco Partners for enterprise solutions.

Nortel Partner for Networking solutions

D-Link channel partner for building network

Systimax Business Partner for building enterprise solutions

Tyco Electronics for providing network infrastructure components and systems.

ADC Krone Channel Partner

Pandut partner, The world leader in network and electrical solutions

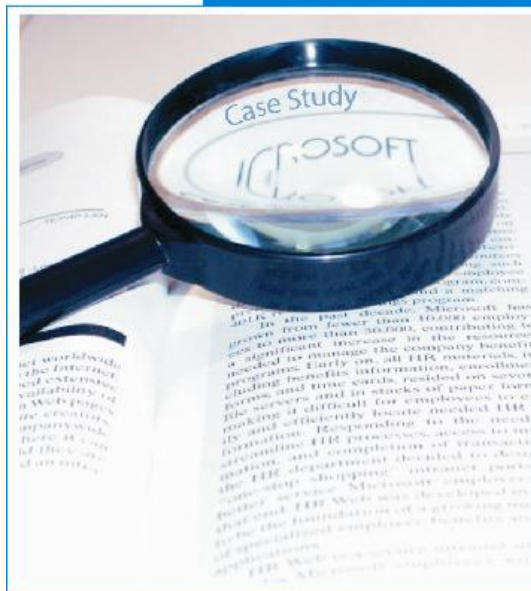
Aten Partner for delivering finest range of KVM and remote connectivity solutions

APW president business partner for world class enclosures

Emerson for developing Data center

APC for developing Data center





Case Study

Illustration of Executed Project – Volkswagen India Pvt. Ltd.

KALYANI TECHNOLOGIES



Illustration of Executed Project – Description

KALYANI TECHNOLOGIES



- ❑ Detailed Planning & implementation of passive infrastructure at Chakan plant.

Project Duration : 24 months

Project Features:

- ❖ **Fibre backbone implementation in Shop floor**
 - 48/24/6 core SM/MM fibre cable laying
 - Termination of all the fibre cable
- ❖ **Copper cabling in Shop floor / Office area**
 - Cat 7 S/FTP cable laying
 - Termination of I/Os and grounding of the jack panels
- ❖ **Overhead Trays installation**
 - Perforated / mesh trays installation
 - In shop floor (at 8mtrs height) and in Data Center
- ❖ **Documentation**
 - Scanning & Testing, Certification
 - Layout designing and numbering of Data points
 - Fibre/Cat7 patching details

Illustration of Executed Project – Network Infrastructure

KALYANI TECHNOLOGIES

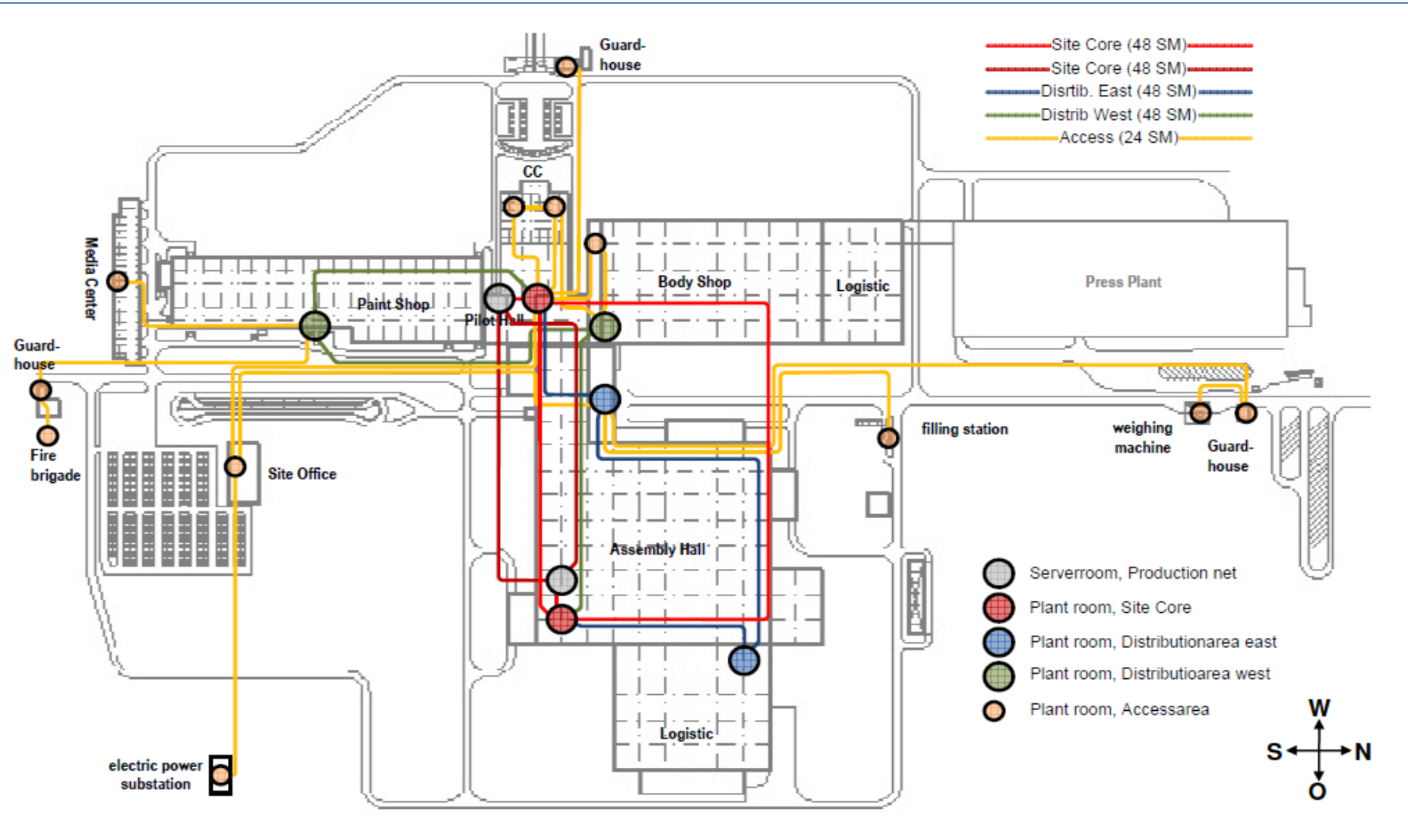


Illustration of Executed Project – Project Snapshot

KALYANI TECHNOLOGIES



Patch cable patching



Data Center



Cat7 S/FTP cable Terminations

Illustration of Executed Project – Project Snapshots

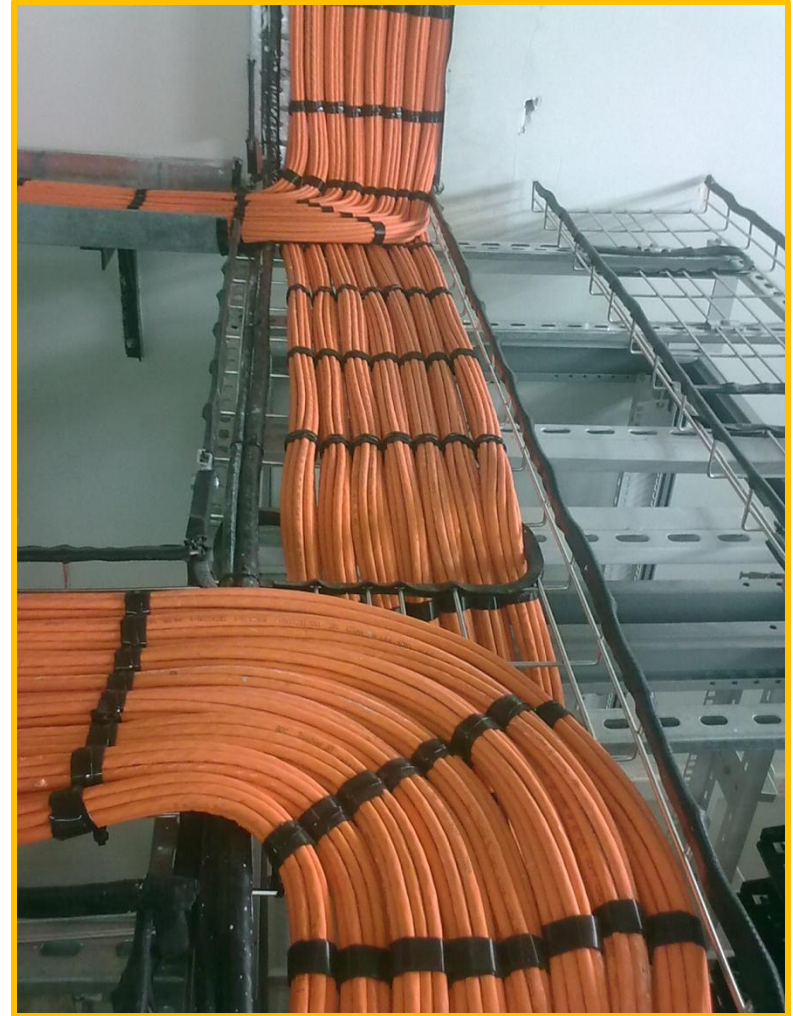
KALYANI TECHNOLOGIES



Cat7 S/FTP cable routing & dressing on trays



Fiber cable Terminations

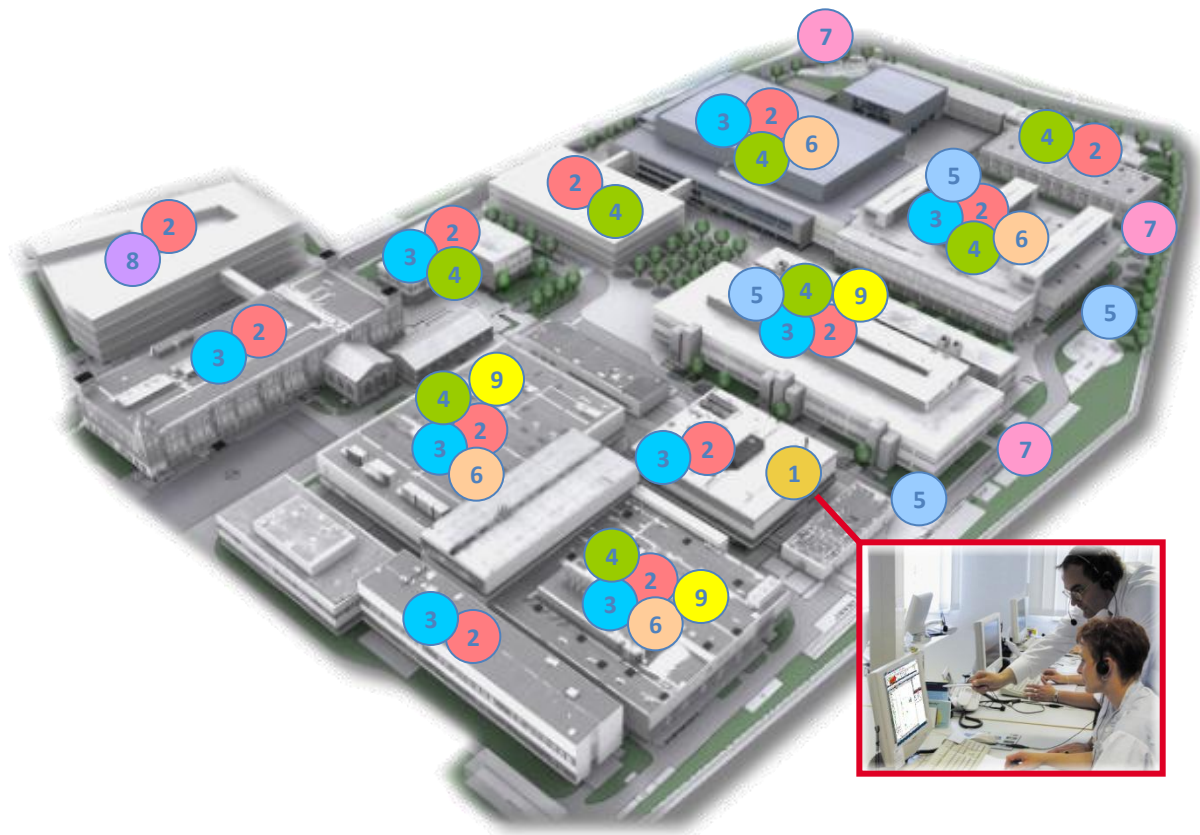


Cat7 S/FTP cable Routing over the
Racks in the Mesh Trays



Services Offered

SAFETY & SECURITY

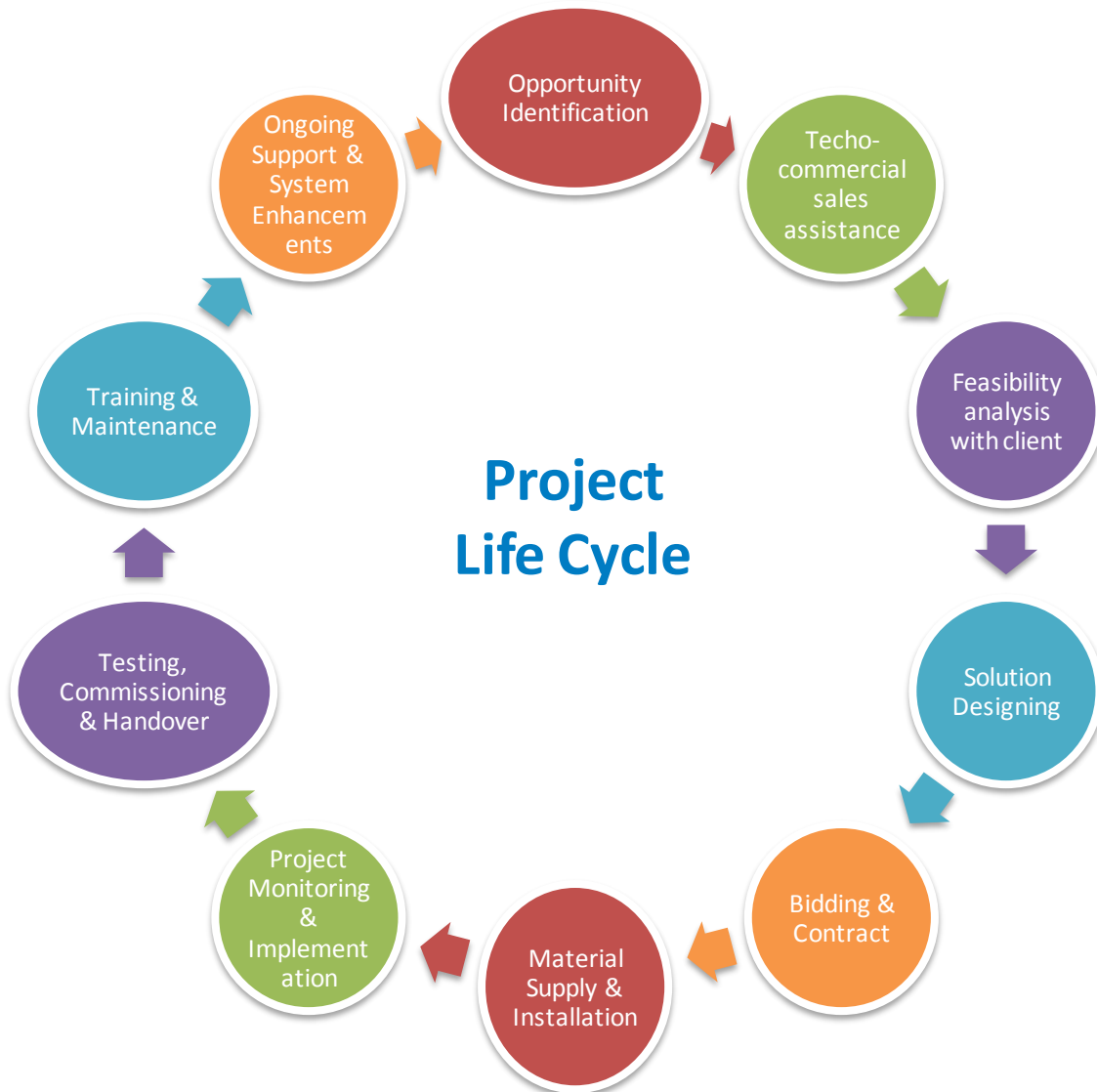


- 1 BIS 24/7 monitoring station
- 2 Fire and Gas, Life safety
- 3 Intrusion system
- 4 Access control , T&A and alarming
- 5 Video surveillance
- 6 PA and evacuation
- 7 Fence and wall surveillance
- 8 Parking lot management
- 9 Building Automation monitoring



one platform

Automatic Safety & Security Systems



Gas Detection Systems

KALYANI TECHNOLOGIES

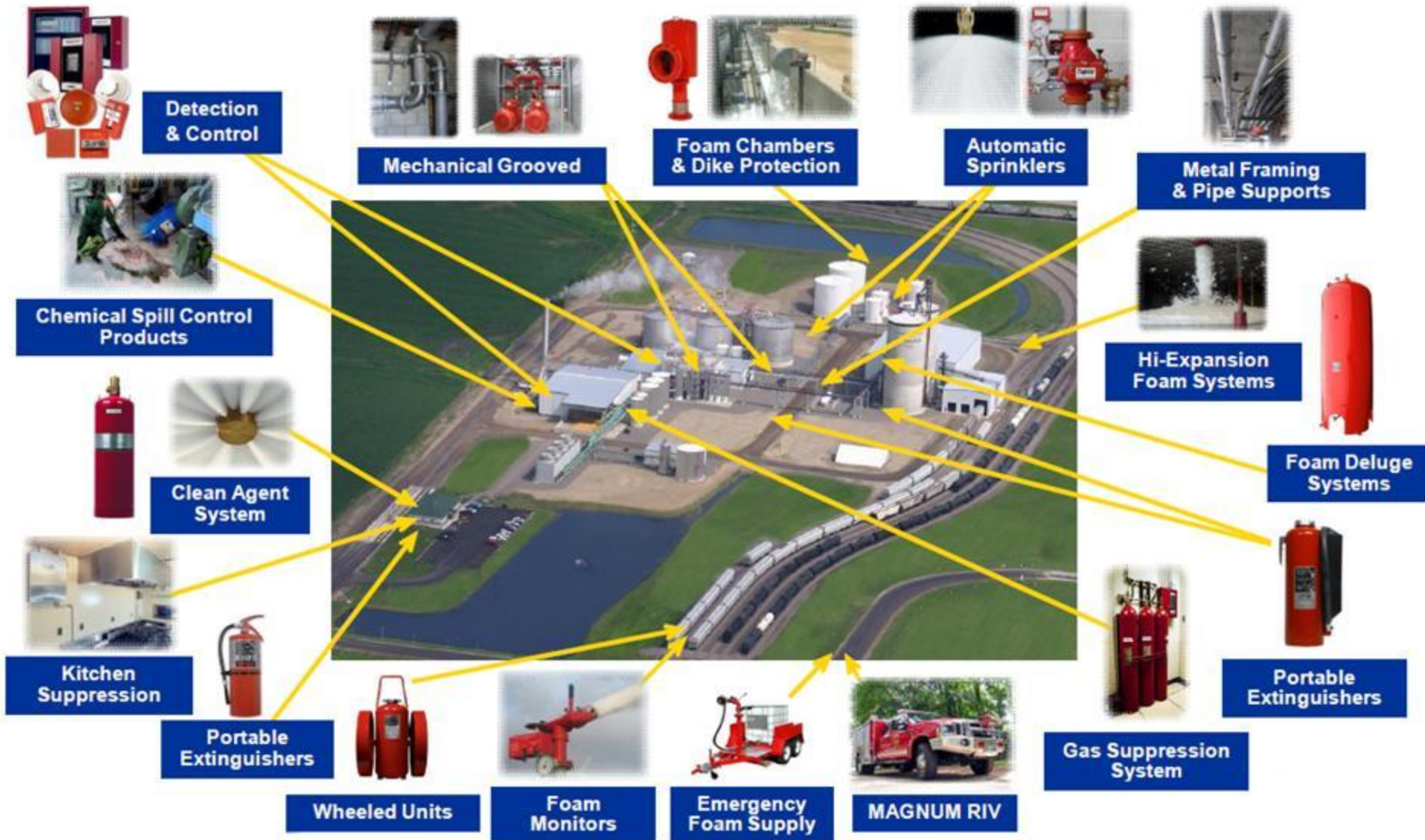


- Solutions offer
 - Portable gas detectors
 - Fixed Gas Detectors
 - Standalone Gas detectors
- Peerless detection of
 - toxic gases
 - combustibles
 - oxygen hazards
- From single-point applications to integrated facility systems, fixed monitoring equipment provides maximum protection from toxic gases, combustibles and oxygen hazards.
- From deserts to the Arctic, our rugged stand-alone systems are fully self-contained protection solutions.
- Systems are easy-to-install, low-maintenance provide continuous monitoring.
- Ex-Proof, ATEX, UL, FM Approved



Bundled Fire Products Profile

KALYANI TECHNOLOGIES



Fire Detection Systems

KALYANI TECHNOLOGIES



- Addressable Fire alarm systems
- Offers early detection of fire to prevent future damages to Men & Machinery
- Integrated to Central Monitoring station
- Auto Alarm to Fire Brigade & other agencies
- Specialty products for Clean Rooms & Pharma, Rough Environment
- System designing as per UL, FM, CE standards
- Integration with Voice Evacuation & Public Addressing system
- Integration with Fire Suppressions and Building Management systems
- User friendly GUI



- Rapid response to both localized fires and wide area overheating.
- Suitable for virtually all environments; dusty, hazardous, vibrating, even inaccessible.
- Easy-to-install, yet rugged, with coatings of fire-retardant polymer, extruded nylon or braided metal.
- Short circuit discrimination.
- Self restoring up to 390° F., engineered to eliminate false alarms and lower maintenance costs.

Listings/Approvals:

- FM Approved
- CSFM Listed

Technical Specifications:

- Restorable up to 374°F
- Three cable styles
- Short circuit discrimination



Fire Suppression Systems

KALYANI TECHNOLOGIES



- The Gas Based Fire Suppression System is an engineered system designed to protect larger, more complex applications or for ultimate.
- The system includes detectors, a control unit, agent storage cylinders, piping and discharge nozzles.
- The system uses clean, fast, people-safe gaseous agent. (FM 200, Ansul, Novac, Argonite)
- Provide active fire protection when coupled with detection and control systems.
- Appropriate for larger compartments or designs utilizing long piping networks.
- Enhanced performance and versatility - Comes with a US Coast Guard approval and is listed and approved with 3-way directional valves for economic protection of multiple enclosures.

Listings/Approvals:

UL Listed, UL Canada (ULC), Factory Mutual Approved, USCG - ADS Marine



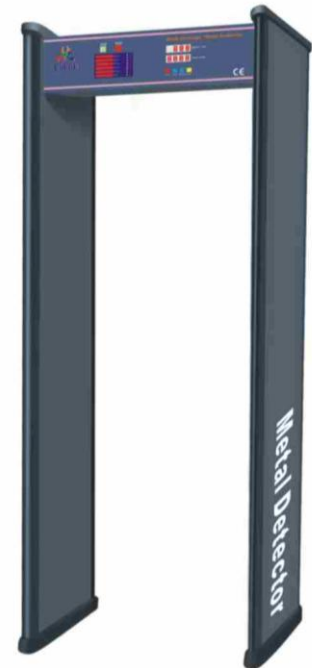
Hand Held Metal Detectors

- Designed to detect magnetic and non-magnetic metal masses.



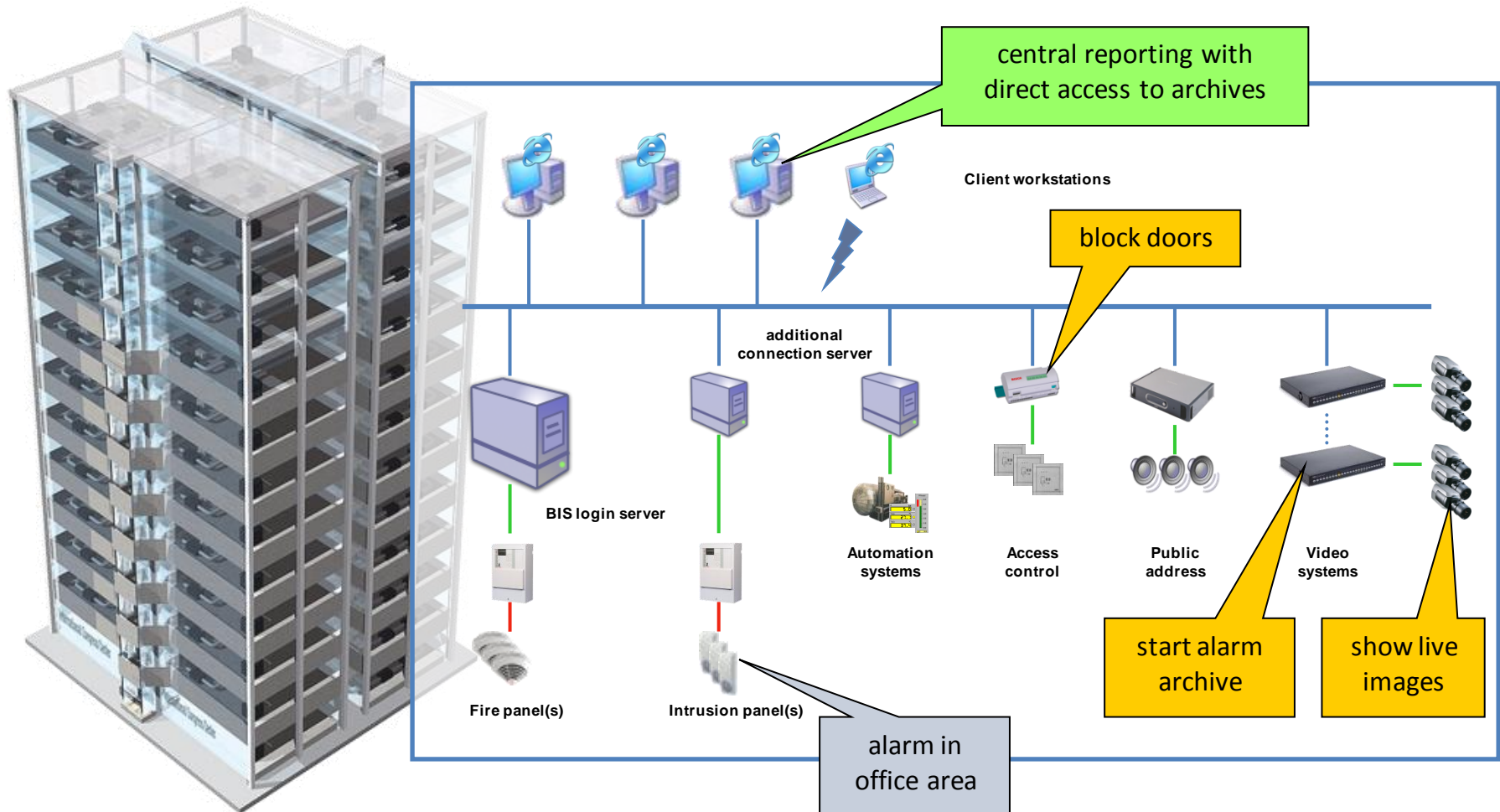
Walk Through Metal Detectors

- High precision, it features more accurate detection.
- Each area can be independently set with 0-99 sensitivity range.
- It can be as sensitive as detecting clip-sized metal.
- Intelligently Automatic recording of alarming times and number of people passed.
- With the unique infrared setting, it has strong omission proof and anti-interfering capacity.
- The cipher protection can prevent parameters being maliciously changed by unauthorized people.
- It is harmless to pacemaker, pregnant woman or magnetic storage media.



Integration System

KALYANI TECHNOLOGIES



We offer world class solutions based on world class products

- ✓ **Electronic Access Control solution using Biometrics, Smart Cards**
- ✓ **Perimeter Protection : Electrical Fence Integrated with CCTV and Alarm system**
- ✓ **Physical Barriers – Turnstiles, Boom Barriers, Bollards, Entry Exit Gates**
- ✓ **Intrusion Detection Systems**
- ✓ **Entry Screening systems, Metal Detectors, vehicle Scanners, X-ray & Baggage Screening systems**
- ✓ **Visitor management system (Integrated with Access control)**
- ✓ **Intelligent CCTV surveillance system, IP & Analogue**
- ✓ **Time & Attendance Recording Systems**

BOSCH

Panasonic

HID



SIVANANDA ELECTRONICS

SONY



We offer world class solutions based on world class products

- ✓ Gas Detection Systems, Portable & Fixed
- ✓ Fire Alarm & Detection System, Addressable & Conventional
- ✓ Linear Heat Sensing Cables
- ✓ Automatic Fire Suppression Systems for Clean rooms , Offices & Store rooms
- ✓ CO2 & Water Mist Fire Suppression Systems
- ✓ Water based Fire Fighting Systems, Hydrant & Sprinkler systems
- ✓ Portable Fire Extinguishers, ABC & DCP Type
- ✓ Building Management & Integration systems
- ✓ GSM / GPRS Based Vehicle Tracking Systems

TREND

BOSCH



Kidde
A UTC Fire & Security Company



ANSUL

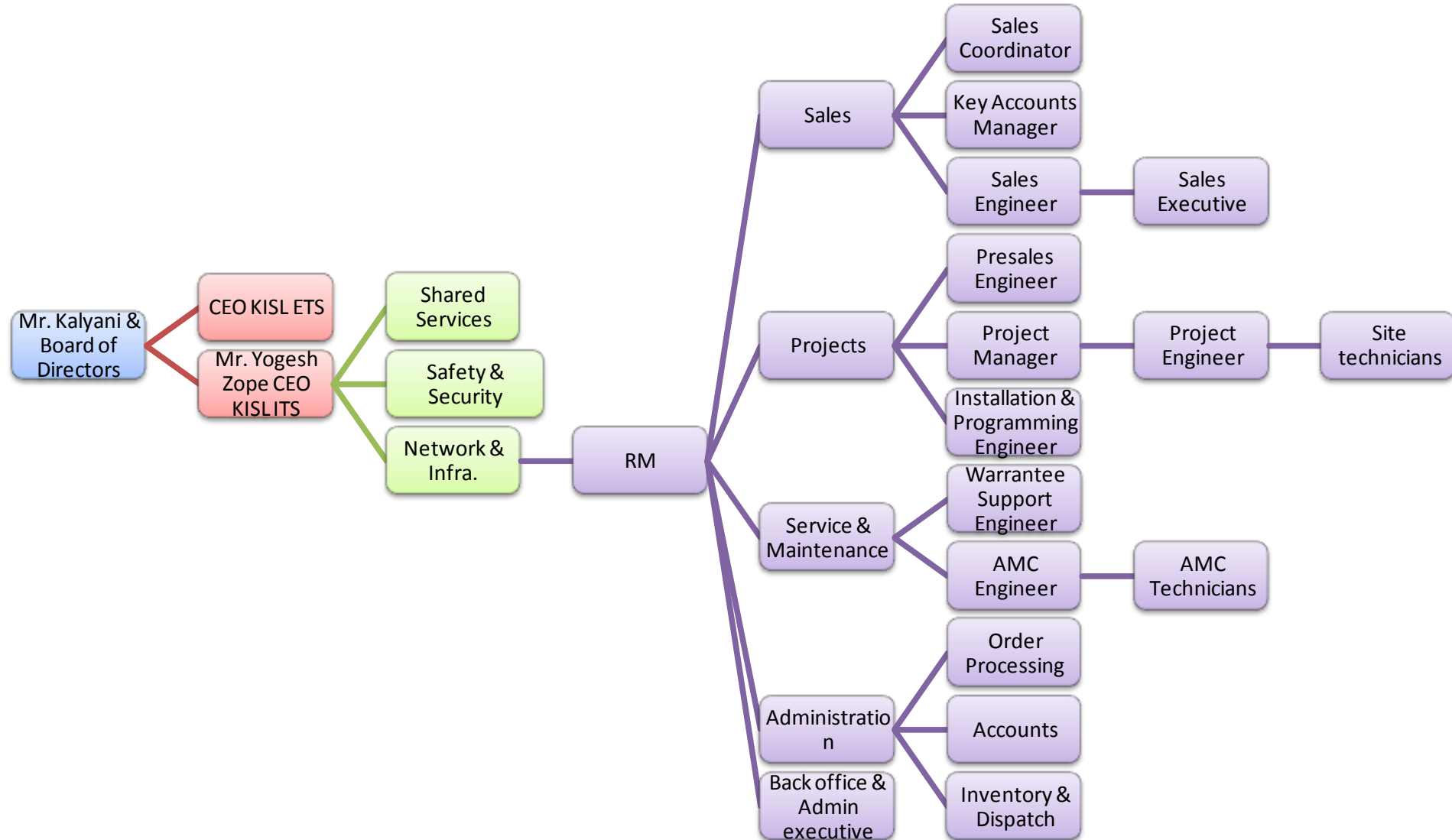
by Tyco Fire Suppression & Building Products



BW Technologies
by Honeywell

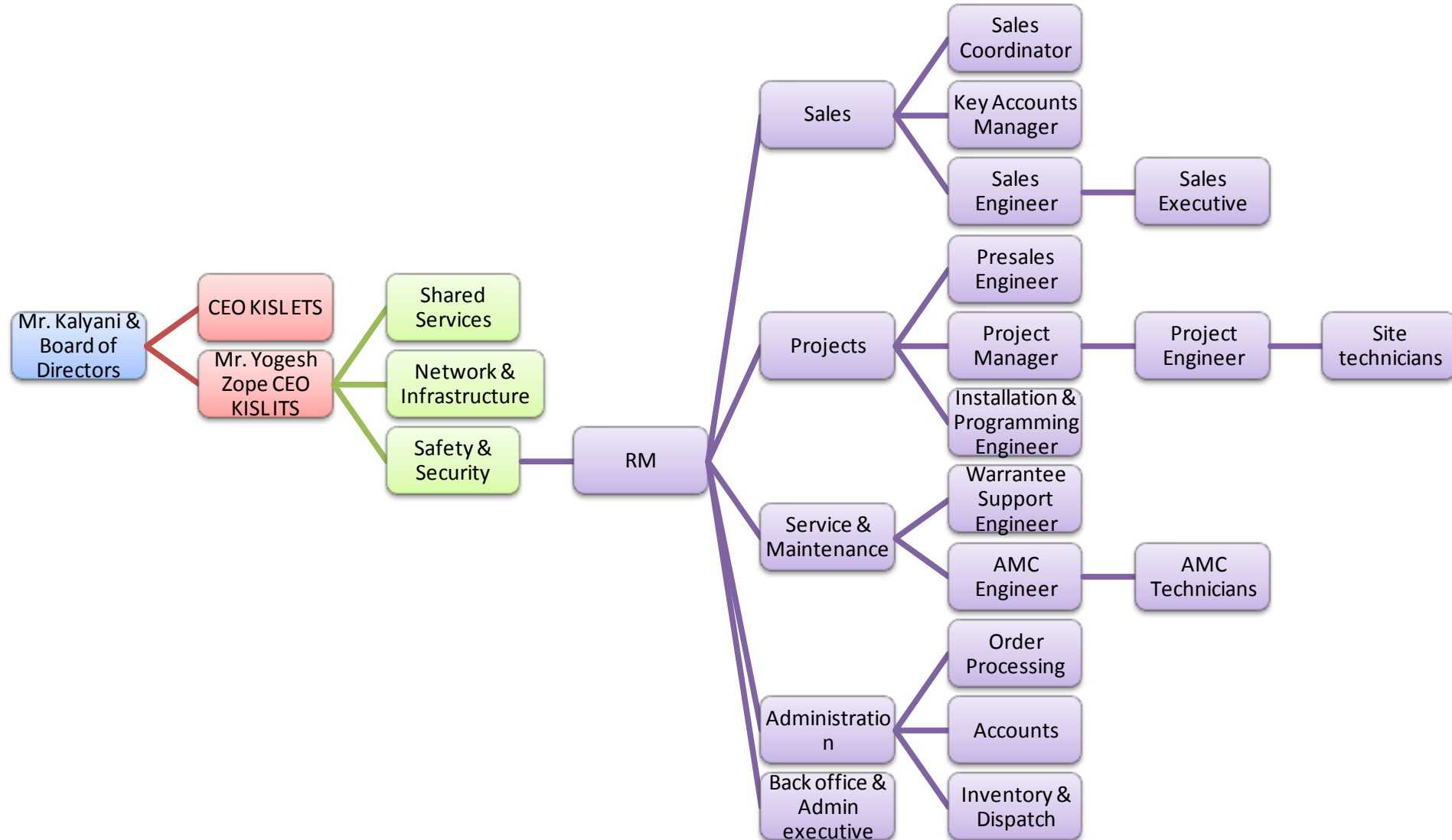
Organization Structure – Network Infrastructure

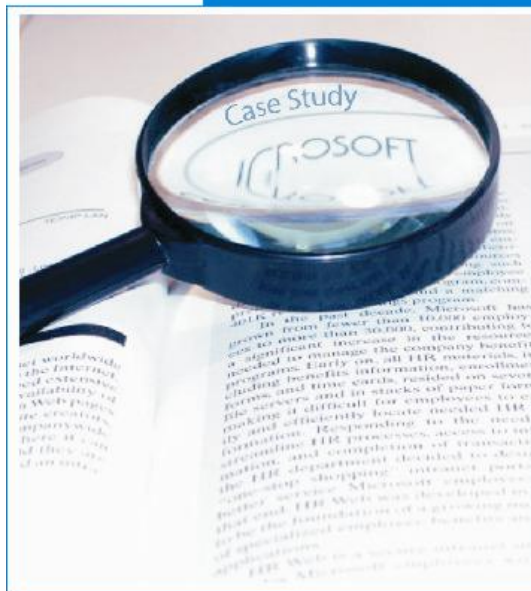
KALYANI TECHNOLOGIES



Organization Structure – Safety & Security

KALYANI TECHNOLOGIES





Case Study

- Pre authenticated visitor entry
- Biometric Verification of the visitor
- Photo of each visitor is captured in the system
- Issue of Smart card to visitor for temp. Access
- Visitor gate pass with Photo
- All entry/ exit time of visitor is recorded
- System will deny access to Blacklisted visitors
- Fully automated system
- Visitor hanging around will be captured at exit



Turnstiles for Employee Access

KALYANI TECHNOLOGIES



- Parking area isolated from the Power Plant
- All vehicles are to be parked in parking area
- Wired Mesh Fencing for parking
- Turnstile installation for employee/ visitor entry / exit
- Continuously monitoring by CCTV cameras
- Linked with Central station- Access control system
- Integrated with Smart
- Exception/ synchronization reports with Kronos (Time attendance system)



Electronically Controlled Material Movement

KALYANI TECHNOLOGIES



- Preauthorization for each material vehicle
- Electronic gate pass (smart card) for material entry
- Automated Boom barriers for entry / exits
- Weighing process linked with SAP and Access control
- All material movement monitored / recorded by CCTV



Access Control System

KALYANI TECHNOLOGIES



- Electronic access control for Office doors
- Single card for Identification, Time attendance and access control
- IP based controller, no physical limitation
- Integration with Visitor management software
- Centrally manageable customized software
- Biometric access control for secure locations
- Integration with CCTV Surveillance



- Badge and Biometric Terminals
- **SmartView™** helps improve workforce productivity by allowing employees access to time off balances, schedules, and more — without having to ask a manager or HR for help
- **Biometrics** helps control buddy punching (employees punching in for one another) with a simple finger-scan verification
- **Battery backup** means the terminals will continue to function even if the power goes down, and employee information is not lost
- **TCP/IP communications** help ensure reliable delivery of information
- **Flash memory** backs up data in case of a network or power outage and keeps unique home employee data
- **Self-service options** allow employees to check balances and schedules without using a manager or HR

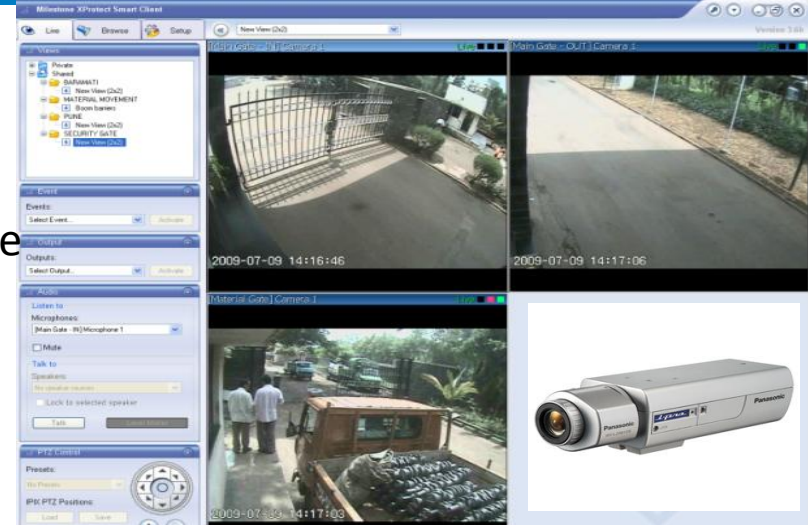


CCTV Surveillance

KALYANI TECHNOLOGIES



- Electronic surveillance for all entry / exits / Important locations
- Also used for process monitoring
- Monitored / recorded through Milestone software
- Used motion detection and other analytics features
- Integrated with Other security systems
- End to End IP CCTV system



Electrical Fence

KALYANI TECHNOLOGIES



- Electrical fence for remote perimeter
- Integrated with CCTV system
- Generates alarm with
 - Cutting of Fence wires
 - Shorting of HV or LV wires to ground
 - Cutting/ disconnection in the data cable
 - Disruption in the wireless communication link
 - Detection of shock
 - Opening of cabinet door (Separate alarm)



Partial Client List

KALYANI TECHNOLOGIES



- | | |
|-------------------------------------|------------|
| ➤ Volkswagen, Pune | Auto |
| ➤ Epicenter Technology | IT/ITES |
| ➤ XPANXION International | IT/ITES |
| ➤ Baramati Agro | Food |
| ➤ Barclays | Finance |
| ➤ Patni Ltd | IT/ITES |
| ➤ Tele Atlas | IT/ITES |
| ➤ Sahyadri Hospital | Healthcare |
| ➤ Bharat Forge Limited (All Plants) | Mfg |
| ➤ Kalyani Thermal Systems Ltd | Auto Anc. |
| ➤ KTMS Engineering | Infra |
| ➤ Kenersys | Energy |



Partial Client List

KALYANI TECHNOLOGIES



- | | |
|----------------------------------|-------------|
| ➤ Armacell GMBH, Sanaswadi | Engineering |
| ➤ Synergy Techpark, Synechron | IT/ITES |
| ➤ Kirloskar Oil Engines | Engineering |
| ➤ Bharat Forge Training Center | Engineering |
| ➤ Patni Ltd. | IT/ITES |
| ➤ Tetra Pak India Ltd. | Mfg. |
| ➤ Tata Motors Ltd. | Automobile |
| ➤ TACO Group | Mfg. |
| ➤ Deepak Fertilizer Ltd. | Petro. |
| ➤ Atos Origin Ltd. | IT |
| ➤ Yamazaki Mazak India Pvt. Ltd. | Mfg. |
| & Counting | |



Why Work With Us?

KALYANI TECHNOLOGIES



- Trusted Name
- Capacity to Delivery small to Large Value projects in Time & Budgets
- Diverse Brands, Rich Product Portfolio
- Bundled Solutions Provider





KALYANI TECHNOLOGIES

Thank You

Kalyani Technologies Limited
Industry House,
Opp Kalyani carpenter specialized steels Ltd.
Mundhwa Pune- 411036
Tel: +91(20) 26814971/72
Email: enquiry@kalyanitechnologies.com
Site: www.kalyanitechnologies.com